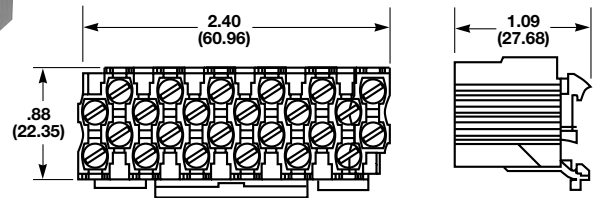


Rail Mount Terminal Blocks

N512

SPECIFICATIONS:

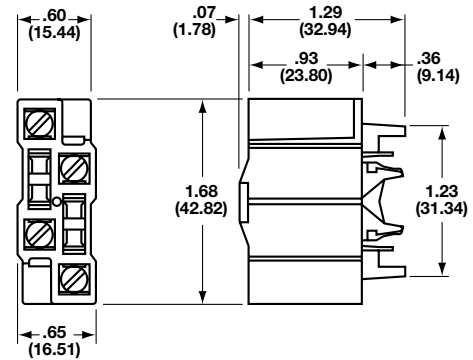
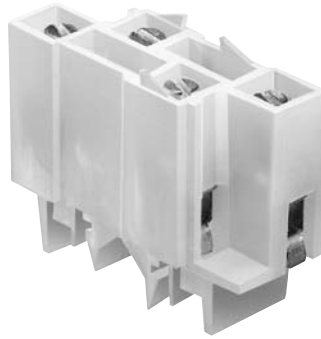
Rating: 5A, 600V; UL/CSA
 20A, 300V; UL/CSA
Center Spacing: .197" (5.00 mm)
Number Of Poles: 12
Circuits Per Foot: 60
Circuit Jumper: JN512, 12 circuits
Wire Range: AWG #12-22 CU
Screw Size: #4-48
Mounting Options: C-rail, 15mm DIN rail
Marking Tape: AT512
Torque Rating: 12 in-lb
Operating Temperature: 105°C



NFT2

SPECIFICATIONS:

Rating: 40A, 600V; UL/CSA;
 55A Factory Wired
Center Spacing: .281" (7.13 mm)
Number Of Poles: 2
Circuits Per Foot: 38
Circuit Jumper: JN2, 2 circuits
Wire Range: AWG #8-22 CU
Screw Size: #8-32
Mounting Options: C-rail
Marking Tape: MT12-1/2
Torque Rating: 18 in-lb
Operating Temperature: 105°C



NFT3

SPECIFICATIONS:

Rating: 40A, 600V; UL/CSA
 55A Factory Wired
Center Spacing: .390" (9.91 mm)
Number Of Poles: 3
Circuits Per Foot: 28
Circuit Jumper: JN3, 2 circuits
Wire Range: AWG #8-22 CU
Screw Size: #8-32
Mounting Options: C-rail
Marking Tape: MT12-1/2
Torque Rating: 18 in-lb
Operating Temperature: 105°C

